

Quick Card

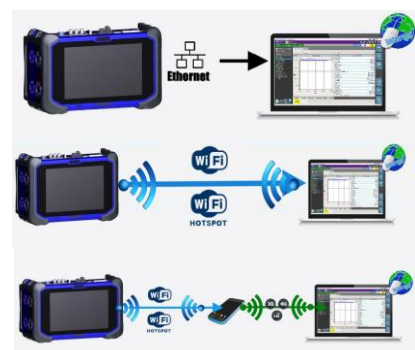
OneAdvisor-800 Platform

Smart Access Anywhere™

This quick card describes how to use **VIAVI Smart Access Anywhere (SAA)** software to remotely control the OneAdvisor-800 and how to transfer configuration files, test reports and other data between the instrument and a Personal Computer (PC).

Equipment Requirements:

- Personal Computer (PC) running Windows operating system
- OneAdvisor-800 equipped with the following:
 - Base Software Release 3.0.0 or later
 - SAA-ADVISOR SmartAccess Anywhere Option
 - ONA-MF-WIFI Option for remote operation via Wi-Fi
- CAT5E or better cable, for remote operation via the RJ-45 Ethernet Management Port
- Internet connection from both PC and OneAdvisor-800 or Direct Ethernet/IP connection between PC and OneAdvisor-800 (via LAN or via direct CAT5E cable attachment)



Download and Install VIAVI Smart Access Anywhere Application:

1. Open an Internet browser on the PC and navigate to VIAVI Smart Access Anywhere software portal: <http://smartaccess.updatemyunit.net/>.
2. Click on link under **Download latest update of SmartAccessAnyWhere Software for Windows** to download the latest Smart Access Anywhere release:

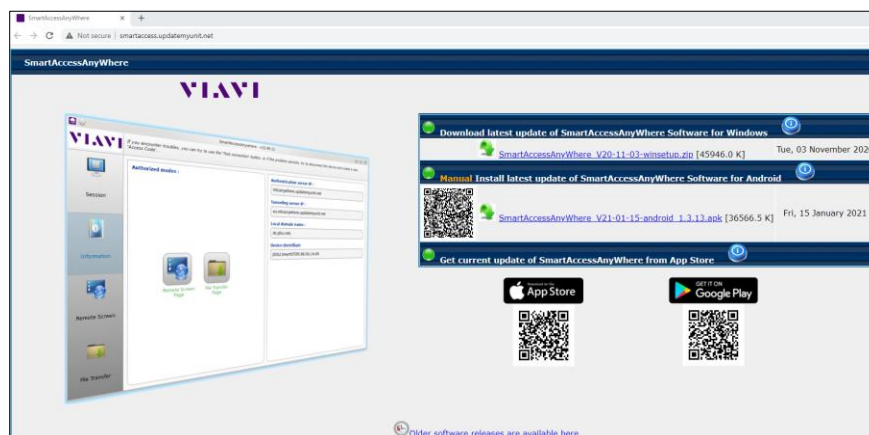

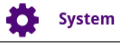


Figure 1: Updatemyunit.net software portal

3. Open the downloaded .ZIP archive and extract the executable Smart Access Anywhere installation image.
4. Double click on the installation image and follow the on-screen instructions to install the Smart Access Anywhere application.

Configuring OneAdvisor-800 Connectivity Settings:

-  Press the Power button to turn on the OneAdvisor-800.
-  Tap the **Home** icon in the **Status Bar** at the top of the OneAdvisor-800 and then select the **System** menu.

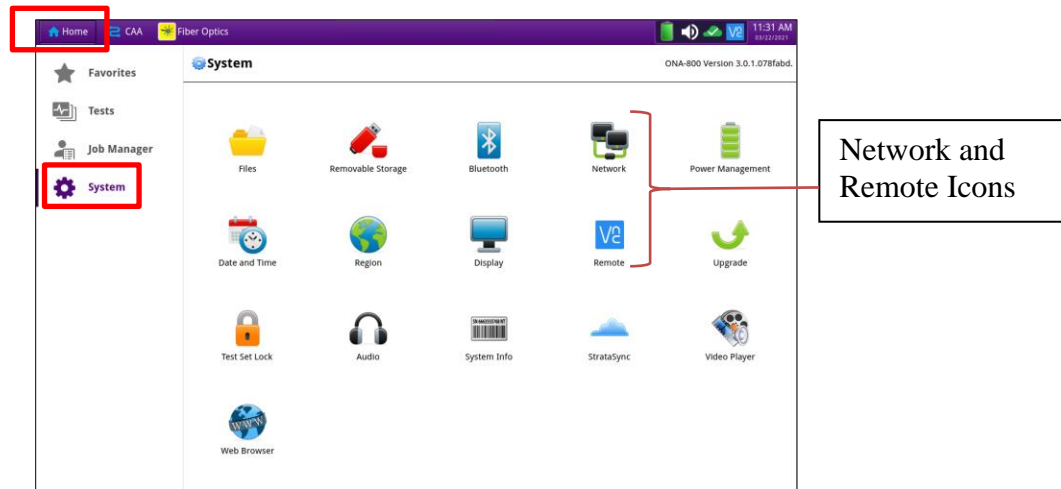



Figure 2: System Menu

-  Tap on the **Network** icon to display Management Network settings.

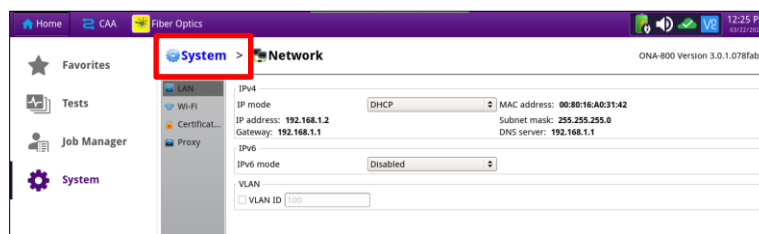





Figure 3: Network Settings

-  If using the OneAdvisor-800 **Wi-Fi interface** for remote access, tap the **Wi-Fi** icon on left screen side, and tap the **Enable wireless adapter** check box. Select the desired Wi-Fi network from the list and provide login credentials to join the network and obtain an IP address.
-  If using the OneAdvisor-800 **RJ-45 Ethernet Management Port** for remote access, connect CAT5E or better cable between the OneAdvisor-800 RJ-45 connector and the router or PC. Tap the **LAN** icon on left screen side. If using DHCP, set **IP Mode** to **DHCP** and wait until unit obtains an IP address; otherwise set **IP Mode** to **Static** and configure a static IP address.
-  Tap the word **System** in “hyperlink” to return to the OneAdvisor-800 **System** menu.



7.

Tap the VNC Remote icon to display Remote operation settings.

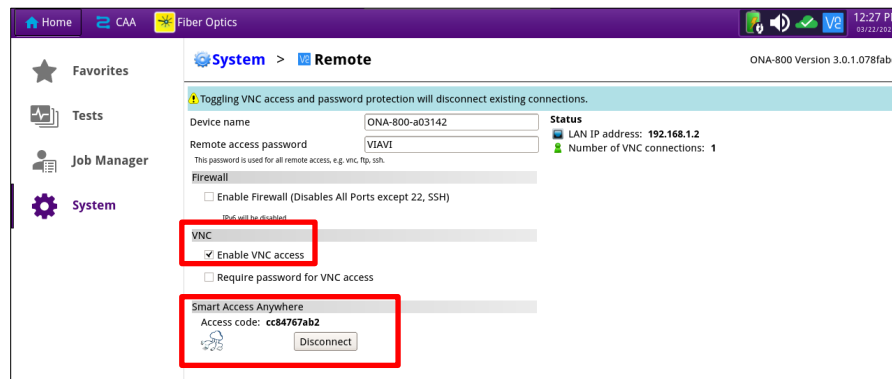


Figure 4: VNC Remote Settings

8. Tap on the **Enable VNC access** check box to enable remote access. Optionally tap on the **Require password for VNC access** check box and enter a password in the **Remote access password** text box.
9. To establish a remote connection to the OneAdvisor-800 via the internet, tap on the **Connect** button under **Smart Access Anywhere** to register with the VIAVI SAA server and obtain the access code. Once the unit is connected, note the **Access code**. The access code must be used when the OneAdvisor-800 is on a private network, such as a Wi-Fi Hotspot or Wireless LAN.

Operating the OneAdvisor-800 from your PC with Smart Access Anywhere:



1.

Launch the VIAVI SmartAccessAnywhere application and enter the OneAdvisor-800 Access Code or IP Address in the text box labeled “**Access code or local IP address**”.

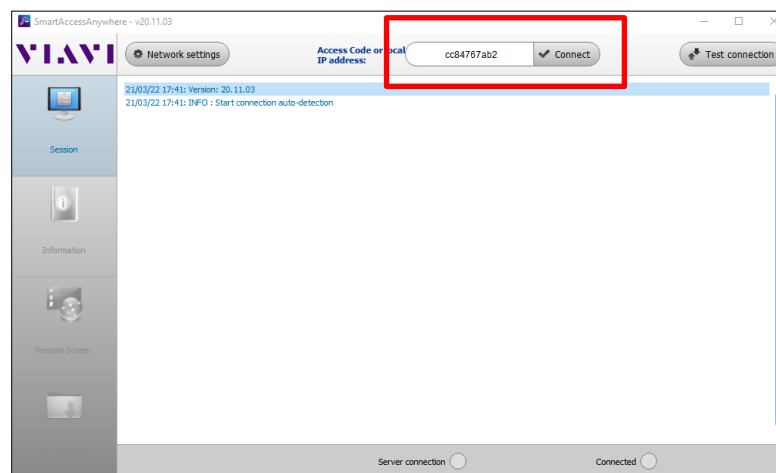
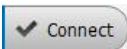


Figure 5: SmartAccessAnywhere Session Screen

2.



Click the **Connect** button and wait for connection.

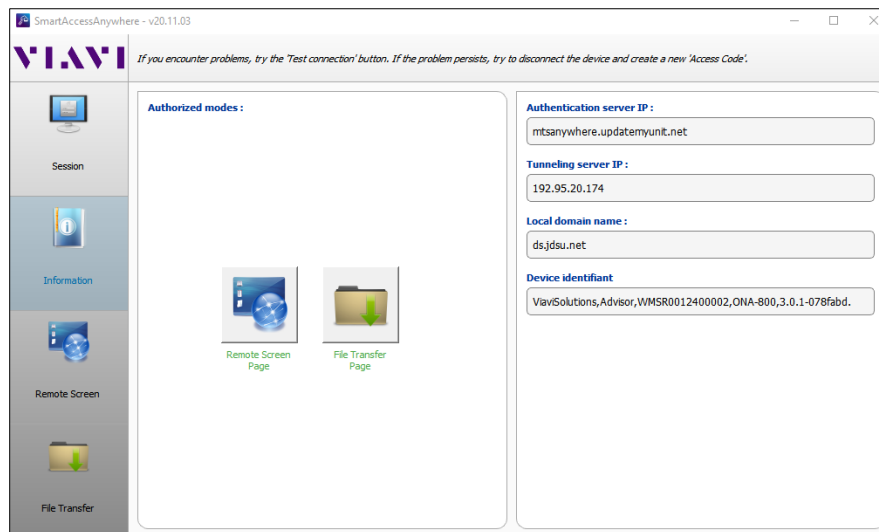


Figure 6: SmartAccessAnywhere Information Screen



3. Click the **Remote Screen Page** icon to gain access to OneAdvisor-800 user interface, where you can configure tests, run tests, or perform any other actions using your mouse instead of the touch screen.

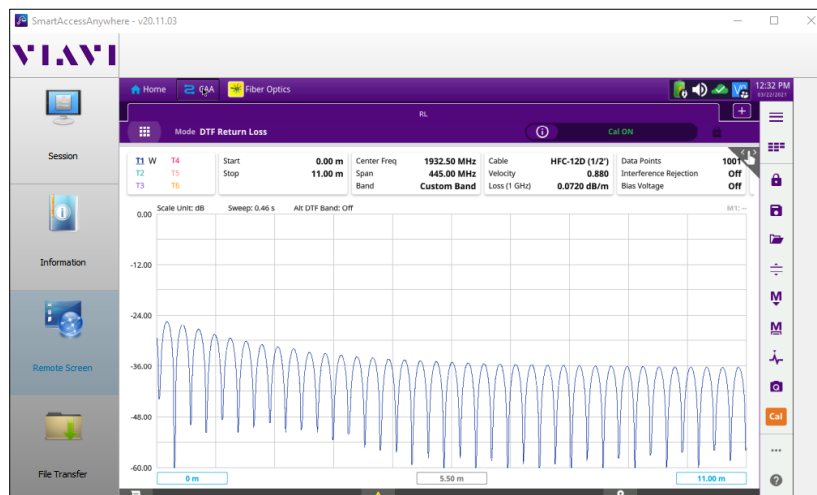


Figure 7: SmartAccessAnywhere Remote Screen Page



4. Click the **File Transfer Page** icon and select any configuration files, reports, or other files and use the **Upload** or **Download** buttons to copy the file(s) to/from the OneAdvisor-800.