

## Quick Card

# T-BERD<sup>®</sup>/MTS 5800 Network Tester Updating Software via Internet


This quick card outlines how to upgrade the T-BERD/MTS 5800 to the latest software revision using a **wired** LAN connection with **internet access**. Please note that software may **not be** updated via Wireless LAN or Mobile hotspots.

T-BERD/MTS 5800 units with software that is more than 2 major releases old, should not be updated via Internet. Please follow instructions on the **Updating Software via USB** quick card to set your unit up to the current software, two major revisions at a time.

### Equipment Requirements:

- Wired Internet Connection
- CAT5E or better cable.

### Connect to Internet:

1. Plug the T-BERD/MTS test set into AC power. You cannot update the software while running on battery.
2. Using CAT5E or better cabling, connect the T-BERD/MTS 5800 Ethernet Management Port on the side of the unit to a LAN port providing internet access.
3. Tap the **System** icon  in the **Status Bar** at the top of the display to show the **System menu**.

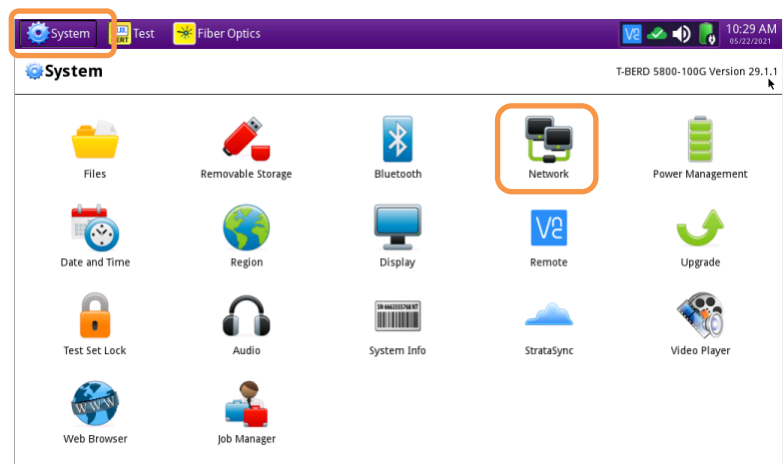



Figure 1: T-BERD/MTS 5800 System Menu

4. Tap the Network Icon  to show the **Network menu**.
5. Tap the **LAN** icon on the left screen side. If using DHCP, set **IP Mode** to **DHCP** and wait until unit obtains an IP address; otherwise set **IP Mode** to **Static** and configure a static IP address.

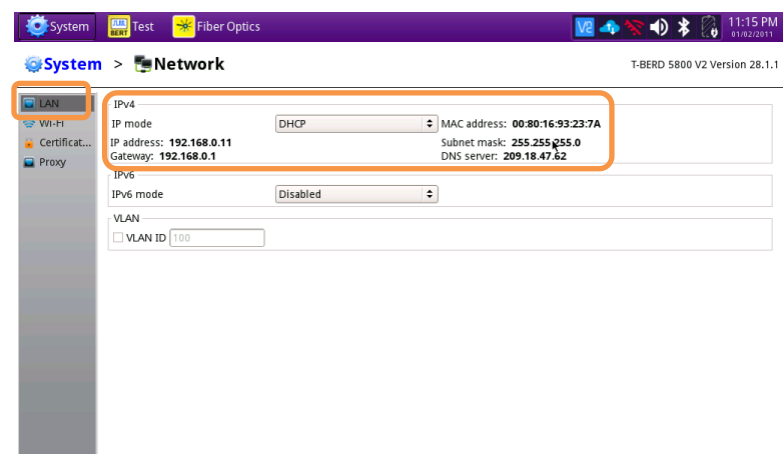
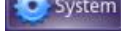



Figure 2: T-BERD/MTS 5800 USB Network Menu

## Upgrade the Test Set:

1. Tap the **System** icon  in the **Status Bar** at the top of the display to show the **System menu**.
2. Tap the Upgrade Icon  to show the Upgrade menu.

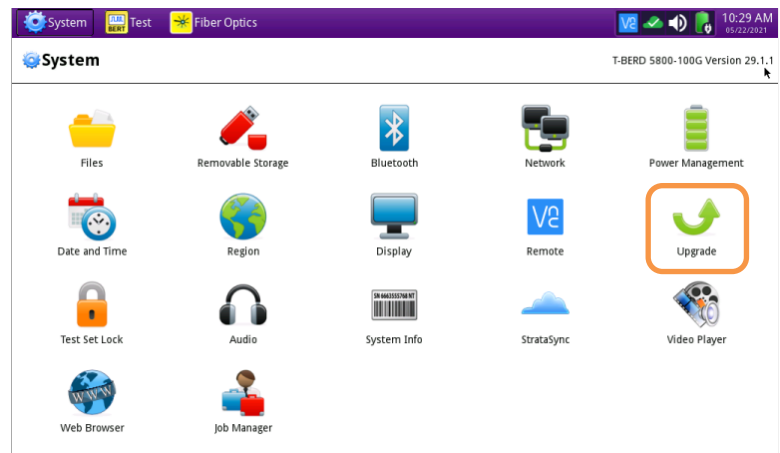
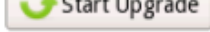


Figure 3: T-BERD/MTS 5800 System Menu

3. Select “Network” for the upgrade method.

4. Tap 

**Connect**  
Query the server for available upgrades.

5. Tap  and follow screen prompts to complete the software upgrade.

**Start Upgrade**

6. The unit will reboot to complete the upgrade.

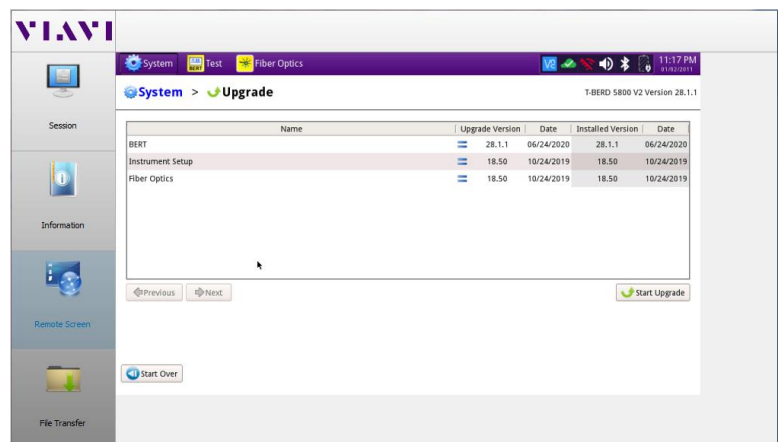


Figure 4: T-BERD/MTS 5800 USB Upgrade Menu