

TestPoint Group Controller



Highlights

- Provides single-point management access to the TestPoint chassis for multiple modules from a single interface
- Provides global test functions which control multiple modules simultaneously
- Provides external clocking capabilities to modules via backplane
- Offers timestamp synchronization source for one-way latency measurements (10 Gbps Module)
- Enables multi-user environment to access multiple modules



Compliance

- CSA Certificate of Compliance to CAN/CSA C22.2 No. 60950-1 (2003) and ANSI/UL 60950-1 (2003) with CSA Mark for Canada and USA
- CSA CB Certificate of Compliance to EN60950-1, IEC 60950-1, and National Deviations with CE Marking
- Class 1 Laser Product, with compliance to EN 60825, IEC 60825, and FDA/CDRH requirements

The JDSU TestPoint Group Controller is an optional single-slot module that plugs into slot 0 of the TestPoint TS-30 and TS-170 chassis. It provides the following main functions:

- Single local area network (LAN) (Static Internet Protocol [IP] or Dynamic Host Configuration Protocol [DHCP]) access point for test system management
- Enables a single IP address for an entire chassis when the TestPoint chassis contains multiple test modules
- Without the Group Controller, each module's faceplate can be connected directly to the LAN
- Global test function capability to control testing across multiple modules within a chassis
- Synchronized test start for multiple modules
- Advanced clocking capabilities
- Expanded clocking features beyond those available on individual test modules
- Multiple external clock synchronization options
- Timing synchronization across entire chassis

INTERFACE SPECIFICATIONS

LAN (Ethernet) Port	RJ45 (10/100BaseT)
LAN management Port	Supports simple network time protocol (SNTP) configurable for static IP address or DHCP
Operator Port	RJ12 into RS-232 serial cable
External Clock Input	50 Ohm SMA (multiple frequencies)
T1	BITS (1.544 Mbps) on 100 Ohm balanced Bantam connector
E1	SSU (2.048 Mbps) on 75 Ohm unbalanced BNC connector
GPS Timestamp	RS-232 (currently unused)
1 PPS	1 Hz pulse from GPS on 50 Ohm SMA

GLOBAL TEST FUNCTIONS

Test functions may be performed individually on each module or globally via the Group Controller. Global test functions include:

- Providing per-slot test status (major, minor, history indicators)
- Concurrent test start/stop on multiple modules
- Concurrent save and restore of the test configuration on multiple modules
- Enabling and disabling of event logs on multiple modules
- Concurrent clearing of errors, events, LEDs on multiple modules
- Selectable module reset within chassis

CLOCKING

Group Controller clocking is distributed to modules via the chassis backplane

Clock sources

Internal, external, or any module's recovered clock

Internal generator

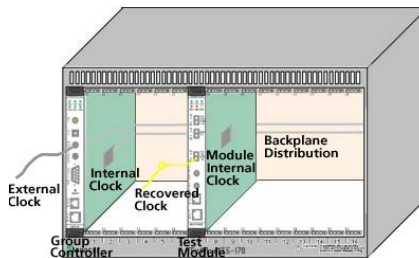
Internal accuracy	± 4.6 ppm
Offset range	± 35 ppm
Offset step size	0.1 ppm

External source: T1/E1/External

T1	100 Ohm Bantam
E1	75 BNC
External	50 SMA
8 kHz/1.544 MHz/2.048 MHz/5.0 MHz/10.0 MHz/19.44 MHz/77.76 MHz/155.52 MHz	

Module recovered clock

Source clock from any module's line recovered clock



System

Connectivity and GUI

Requires PC and 10/100BaseT LAN link. Static IP and DHCP (dynamic IP) are supported.

GUI interface via web browser and Java plug-in. No PC client software required.

TS-30/170: PC connects to modules via the Group Controller (one LAN cable) or directly to the faceplate of each module

TS-30/170: Group Controller supports multiple concurrent users

Automation

Via Command Line Interface (CLI) ASCII commands

Connection to CLI via Telnet, socket connections, or serial port

Automation toolkits available in: Python/C/TCL/LabView/Visual Basic

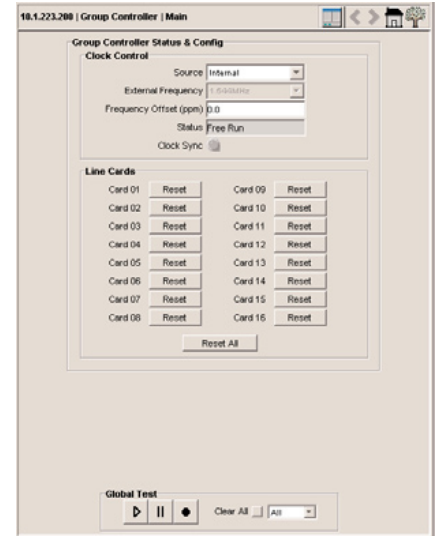
Management functions

GUI installation tool provided for field software upgrades

Each test module has non-volatile storage for: software loads/configuration files/event logs/test results/capture files

Result files (event logs/test results/RFC 2544 results) from test modules can be automatically transferred to the controlling PC

TS-30/170: Group Controller module provides external clocking ports:T1/E1/GPS (including 10 MHz)/and other rates



ORDERING INFORMATION

Group Controller Module

N530-0110 Group Controller Module with Clock Distribution

Accessories

OPT 022x-10 Wheeled hard travel case accepting TS-10 or TS-30 chassis

Test & Measurement Regional Sales

NORTH AMERICA TEL: 1 866 228 3762 FAX: +1 301 353 9216	LATIN AMERICA TEL:+1 954 688-5660 FAX:+1 954 3454668	ASIA PACIFIC TEL:+852 2892 0990 FAX:+852 2892 0770	EMEA TEL:+49 7121 86 2222 FAX:+49 7121 86 1222	WEBSITE: www.jdsu.com/test
---	---	---	---	--