

Changing the TCP Port used on the Xgig chassis

Currently the Xgig applications use TCP ports 2000 and 5200 for communication with any Client that is connected. Because of the need for more flexible networks and new firewall requirements, many users find that TCP ports 2000 and 5200 are already being used by many of their current application which may require the need to change the Xgig TCP ports.

Now a user can change the TCP ports by using the utility called, "Edit Xgig TCP ports". This allows a user to change the standard TCP port 2000 or 5200 to another value. This utility is run from the "Start" menu on your Windows PC, not from any of the Xgig Apps. See images below and also the note at the bottom on how to use, as well as how NAT protocol is not supported with Xgig.

You will need to edit the TCP port for the client applications by selecting **Edit Xgig TCP Port** from the **Start** menu. A dialog appears where you can type in a value for the TCP port. Click **Apply** to change the port. You can also change the TCP port for the most recently used chassis by clicking the chassisname in the Most Recently Used Chassis section of the dialog.

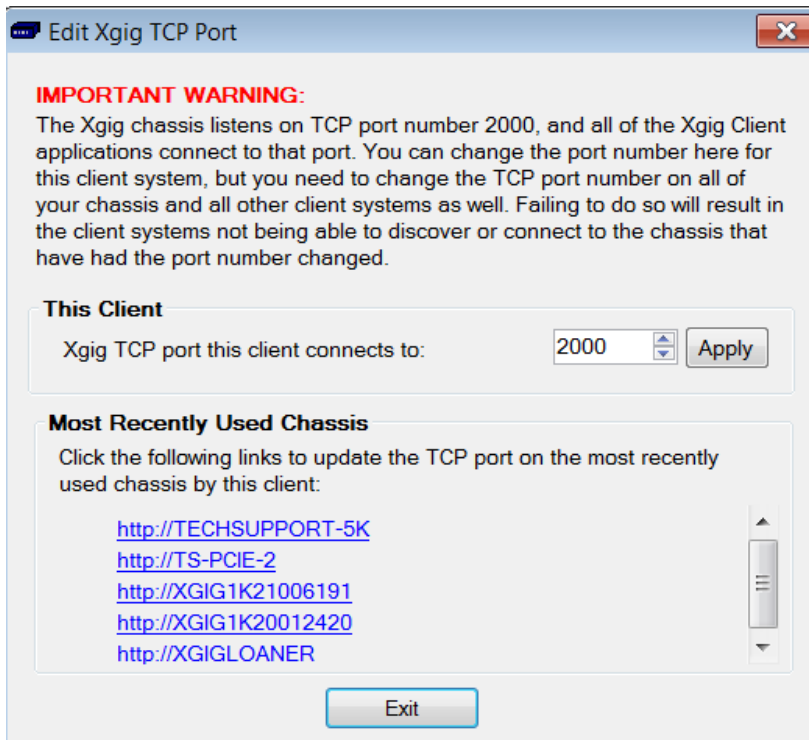
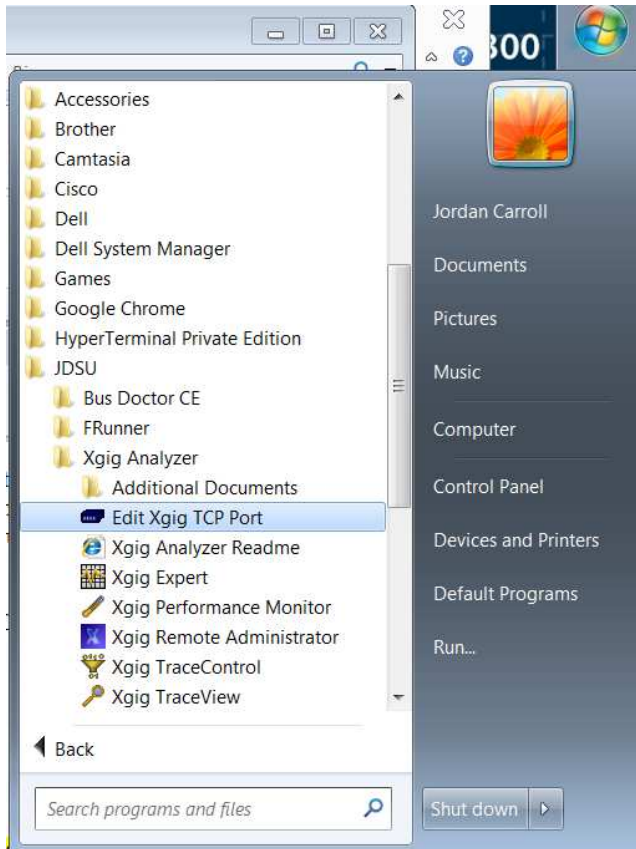
Furthermore, you will also need to edit TCP port value on the chassis via the web page.

(For sites where the Xgig Analyzer is the only application, it is suggested that the DCOM port remain closed.)

The screenshot shows the JDSU Xgig Configuration web interface. The page title is "Address Configuration". The interface includes a navigation menu with options: Configurations, Status, Upgrades, Server, Security, and Help. The main content area displays the following configuration details:

Computer name	TECHSUPPORT-SK
MAC Address	00-80-16-90-0A-15
Current IP	10.75.131.40
Current Subnet Mask	255.255.254.0
Current Default Gateway	10.75.130.1
DHCP	Enabled <input checked="" type="checkbox"/>
Static IP	Disabled
Static Subnet Mask	Disabled
Static Default Gateway	Disabled
Xgig client TCP Port	2000

A red circle highlights the "Xgig client TCP Port" field, which contains the value "2000". Below the field is a "Save" button. The footer of the page indicates "© 2014 JDSU, Inc."



Note:

- 1) TCP port needs to be changed on the Client and the Xgig chassis
- 2) Network Address Translation (NAT) is not supported.
- 3) Any Xgig Chassis protected by a firewall that uses Network Address Translation (NAT) cannot be accessed from Xgig clients outside the firewall.