



Xgig Jammer

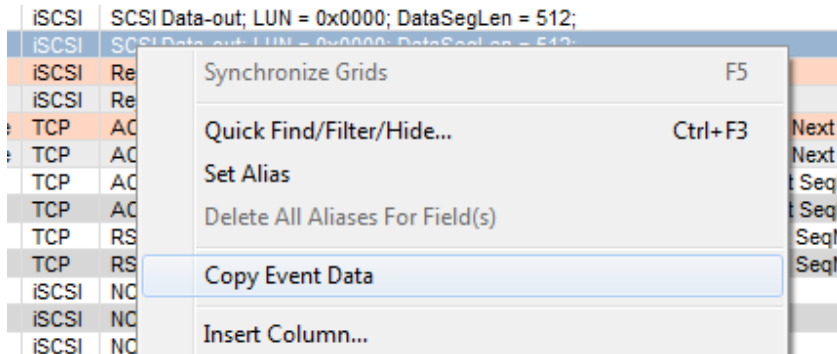
How to copy a captured event from Trace View to Jammer for a Trigger or Jammed event

Viavi Solutions
1-844-GO-VIAVI
www.viavisolutions.com

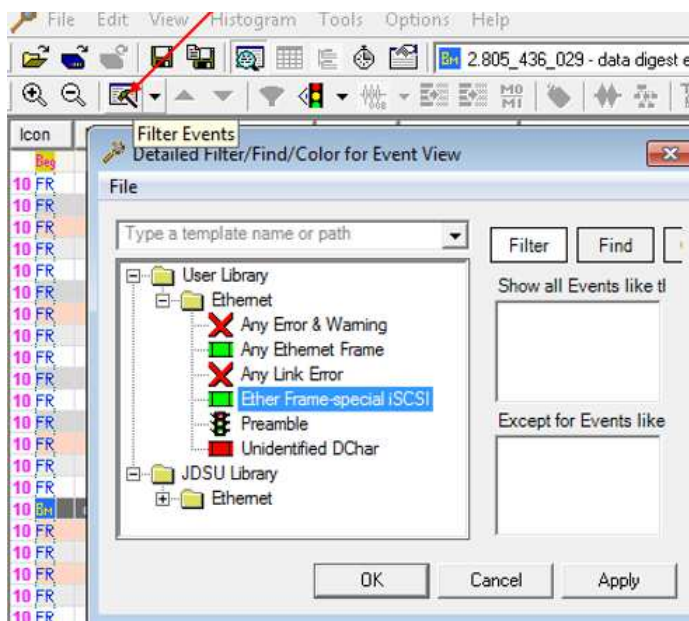
© Copyright 2018 Viavi Solutions. All rights reserved. Copyright release: Reproduction and distribution of this guide is authorized for US Government purposes only. All other trademarks and registered trademarks are the property of their respective owners. Specifications, terms, and conditions are subject to change without notice.

Many times, a user will find an important event in Xgig Trace View that they would like to also use in the Jammer for their error injector tests. Below are 4 simple steps needed to accomplish this task.

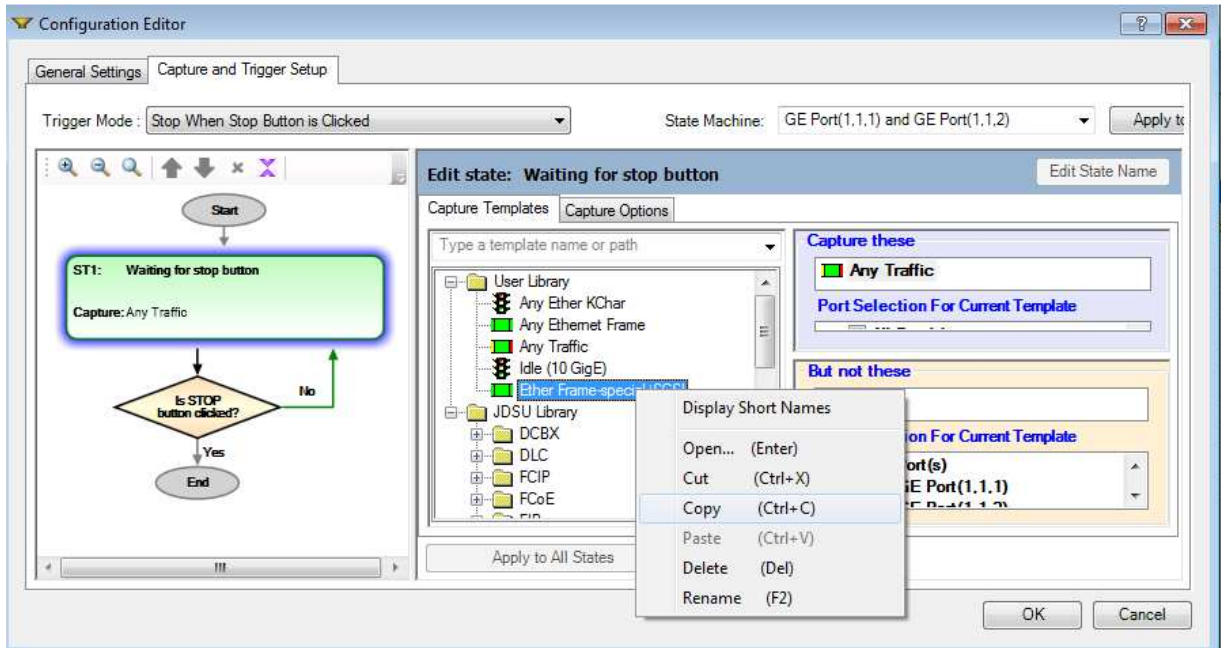
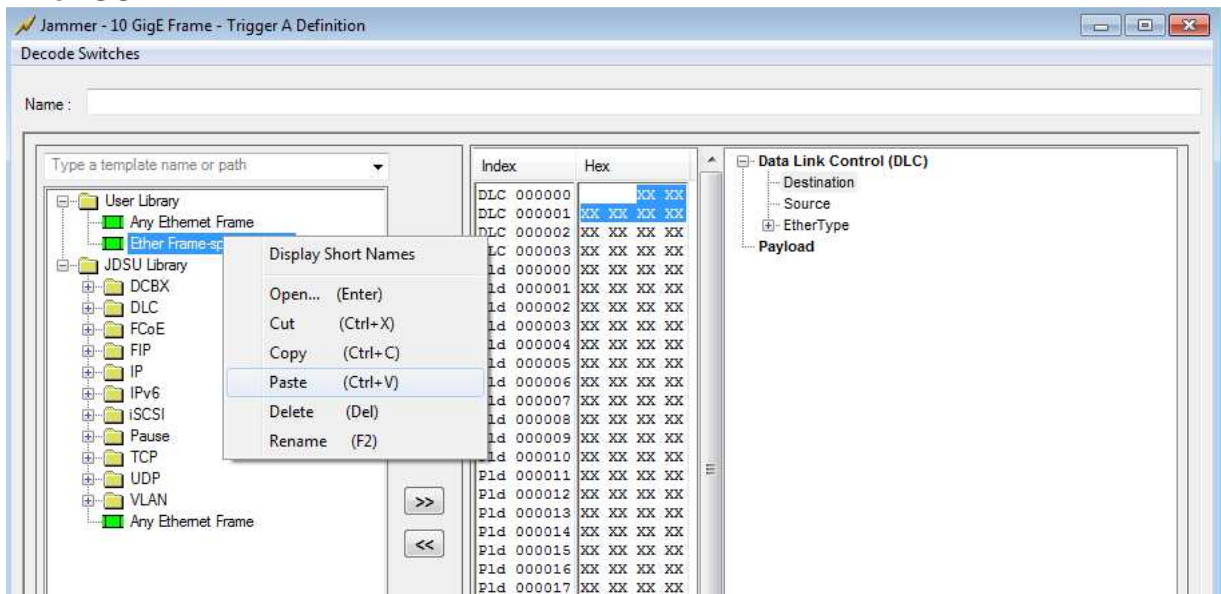
- 1) Find a frame/ordered set in Trace View. Right click on this event and select “Copy Event Data”



- 2) Next open the “Filter Events” icon in Trace View and paste this special frame in the “User Library” under the folder type. The frame used below is called “Ethernet Frame-special iSCSI”



- 3) Next you will need to copy this frame template frame from the Analyzer directory to the Maestro directory. To do this, open up Trace Control, then go to the “Configuration Editor” and copy the frame template (.ftf) file from here to the Maestro GUI by pasting it into the Jammer “Trigger” window, under the “User Library” and the specified folder. See 2 images below. Note, any template you copy from Trace View into the Detailed Filter library is also saved into the Trace Control Library used for triggering. (it’s automatically appended)

Trace Control GUI:**Jammer GUI:**

- 4) Now you have successfully move the frame from Trace View GUI to Maestro(Jammer) GUI used for Jamming. You can just click on the ">>" to move over that "Ether Frame-special iSCSI" as shown below to use as a Trigger or Jammed event.

