

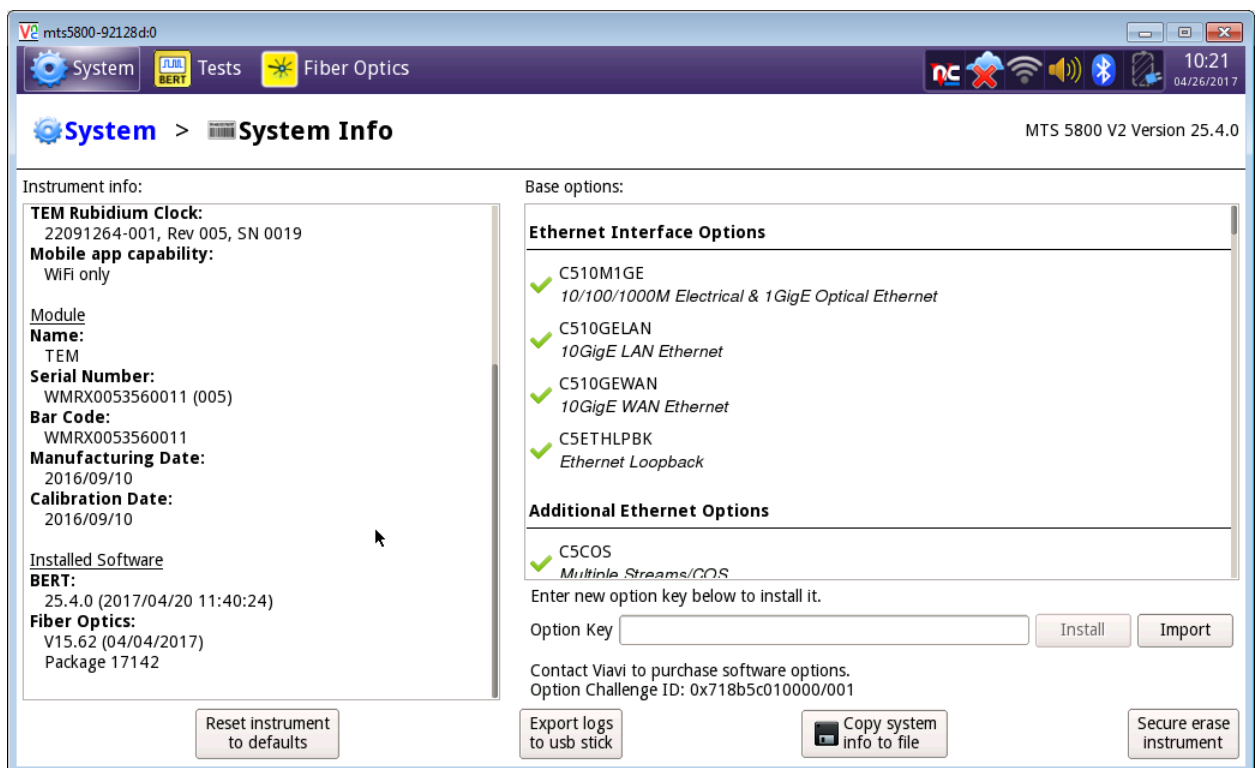


TB5800 V2 Secure Erase

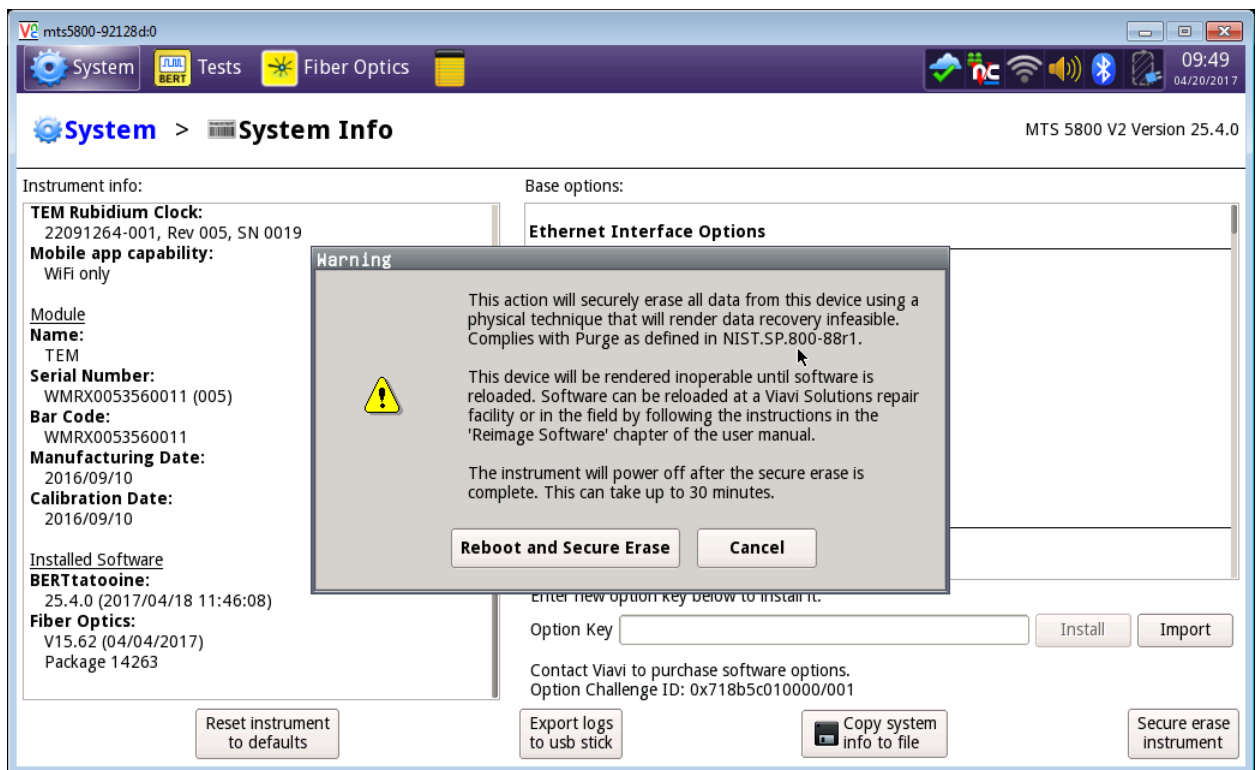
Secure Erase was added in revision 25.4 for the MTS/TBERD 5800 V2 and 100G models. Secure Erase is intended to be used only when it is necessary to remove the unit from a highly secured area. This process ensures that no data can be removed with the unit. To tell which model 5800 you have press SYSTEM and then SYSTEM INFO. The modem is displayed in the upper right hand corner.

CAUTION : Secure Erase will render the unit unusable until the software is successfully reimaged! This will require you to create a reimage USB. As all data is erased in the process the user should remove any result files they wish to retain, from the unit, before proceeding.

1. Press the SYSTEM icon on the V2 5800 and select the SYSTEM INFO icon.



2. If you wish to remain on the currently installed version, note the installed BERT version numbers under the Installed Software on the left (you may have to scroll down to see the rev levels). Ensure that you have a reimage USB created and available to recover the unit after the reimage. See the Appendix on downloading and creating a reimage USB.
3. Press the Secure erase instrument button in the bottom right. You will receive the following warning.



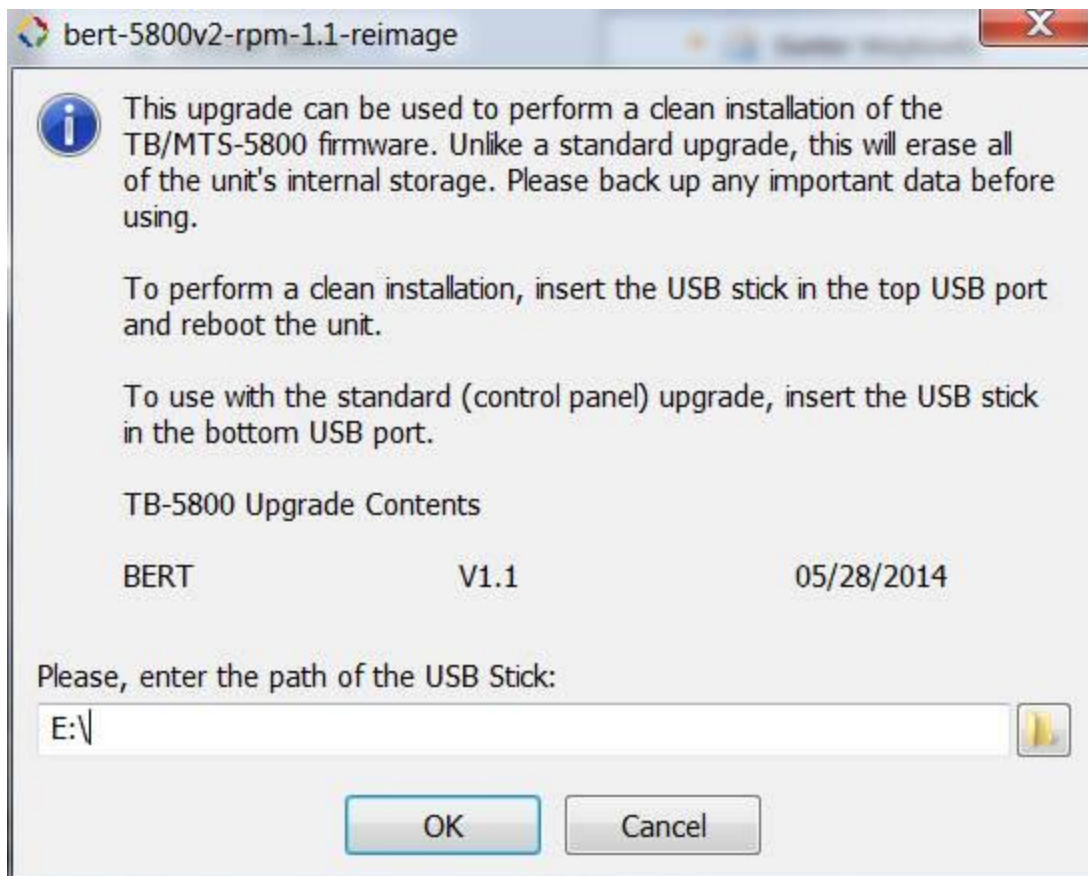
To proceed with the erase press the Reboot and Secure Erase button. To cancel, press Cancel. Once you start the erase, the unit will not be functional again until the USB reimage has been completed!

4. Once the unit has been erased and removed from the secured area ensure the unit is powered off and place the reimage USB on the first USB port (the USB port closest to the display). Power the unit on and the reimage process will start automatically.

Appendix – Creating a reimage USB

You will need a USB at least 2G or higher in size with a FAT32 format.

1. Go to <http://5800v2.updatemyunit.net>
2. Click on View All Software Releases and download the reimage exe for the bert version that you wish to load. Ex: Base5800v2-Bert-25.4.0-Fiber-17142-reimage.exe
It must have the word reimage in the name or it is not a reimage file. A normal upgrade file cannot reimage a unit. The above example is the reimage file for Bert version 25.4.0
3. Install the USB in the computer and then double click on the reimage exe file. You will get a window like the one shown below. Use the button provided to set the correct USB drive for the destination path and then press OK to uncompact the files to the USB drive.



4. Once all the files have un-compacted to the USB safely eject the USB from the PC and ensure the USB is available for the reimage process after the secure erase has been performed.